



MOVE INN ESTATES
MAKING THE RIGHT MOVE



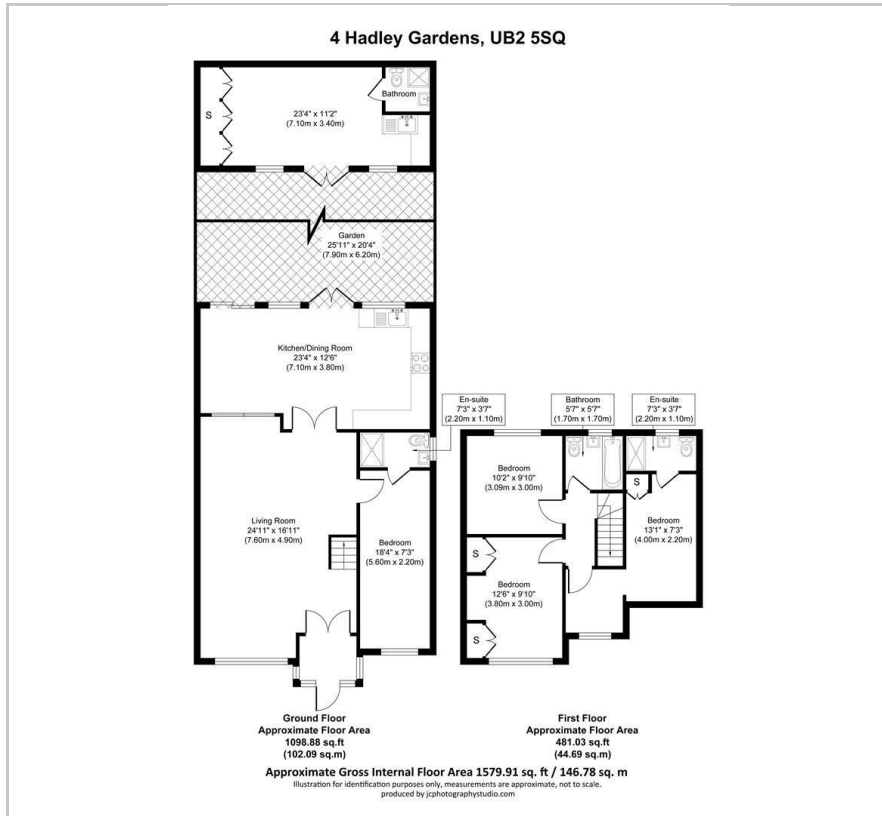
Hadley Gardens

, Southall, UB2 5SQ

£3,600 Per Month



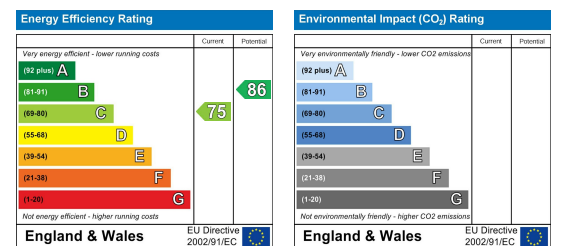
Floor Plan



Area Map



Energy Efficiency Graph



We are delighted to present this immaculate 4-bedroom property located in the prestigious area of Norwood Green. Available immediately for a rental of £3600 per calendar month, this exceptional home offers luxurious living in a highly sought-after location.

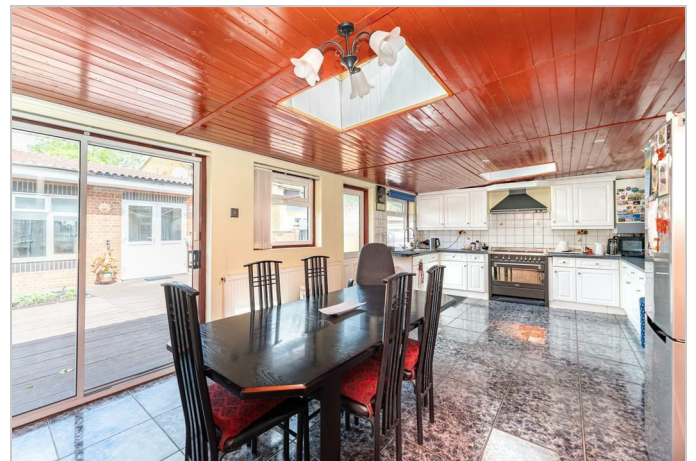
On the ground floor, the property features a spacious bedroom, an open-plan living area, and a fully fitted kitchen, ideal for contemporary family living and entertaining.

The first floor comprises three generously sized bedrooms, including a master bedroom with an en-suite bathroom, as well as a beautifully appointed family bathroom.

The property also benefits from a well-sized garden with an outbuilding/summerhouse, providing excellent storage and additional versatile space.

Conveniently situated near Norwood Green Primary School, the property is within easy reach of numerous local amenities and offers excellent transport links such as direct access to M4&M25, making it an ideal choice for families and professionals alike.

This outstanding property is sure to attract considerable interest. To avoid disappointment, please arrange a viewing at your earliest convenience.



These particulars, whilst believed to be accurate are set out as a general outline only for guidance and do not constitute any part of an offer or contract. Intending purchasers should not rely on them as statements of representation of fact, but must satisfy themselves by inspection or otherwise as to their accuracy. No person in this firm's employment has the authority to make or give any representation or warranty in respect of the property.

46 Vicarage Farm Road, Hounslow, Middlesex, TW5 0AB

Tel: 0208 574 4966 Email: info@moveinnestates.co.uk www.moveinnestates.co.uk